

# Batesville, Arkansas Comprehensive Plan

Adopted by the Batesville Planning Commission, February 2, 2009  
 Adopted by the Batesville City Council, February 24, 2009 by Resolution Number 2009-02-03-R  
 Update approved by the Batesville Planning Commission, February 9, 2010  
 Update approved by the Batesville City Council, February 9, 2010 by Resolution Number 2010-02-01-R  
 Update approved by the Batesville Planning Commission, September 13, 2010  
 Update approved by the Batesville City Council, September 22, 2010 by Resolution Number 2010-09-01-R  
 Update approved by the Batesville Planning Commission, October 4, 2021  
 Update approved by the Batesville City Council October 12, 2021 by Resolution Number 2021-10-1-R

### Proposed Land Use

- |                            |                          |
|----------------------------|--------------------------|
| Downtown                   | High Density Residential |
| Commercial                 | Historic Residential     |
| Multiple Use               | Industrial               |
| Rural Density Residential  | Public/Quasi-Public      |
| Low Density Residential    | Recreational             |
| Medium Density Residential | Urban Reserve            |

### Flood Hazard

- Floodplain
- Floodway

### Steep Slopes

- Steep Slopes

### Historic Districts

- Commercial Historic District
- Residential Historic District

### Points of Interest

- |                     |                       |
|---------------------|-----------------------|
| Government Building | Hospital              |
| Golf Course         | Sewer Treatment Plant |
| Soccer Complex      | College               |
| Community Center    | School                |
| Aqua Center         | Museum                |
| Fire Station        | Armory                |
| Police Station      | Park                  |
| Post Office         | Cemetery              |
| Chamber of Commerce |                       |

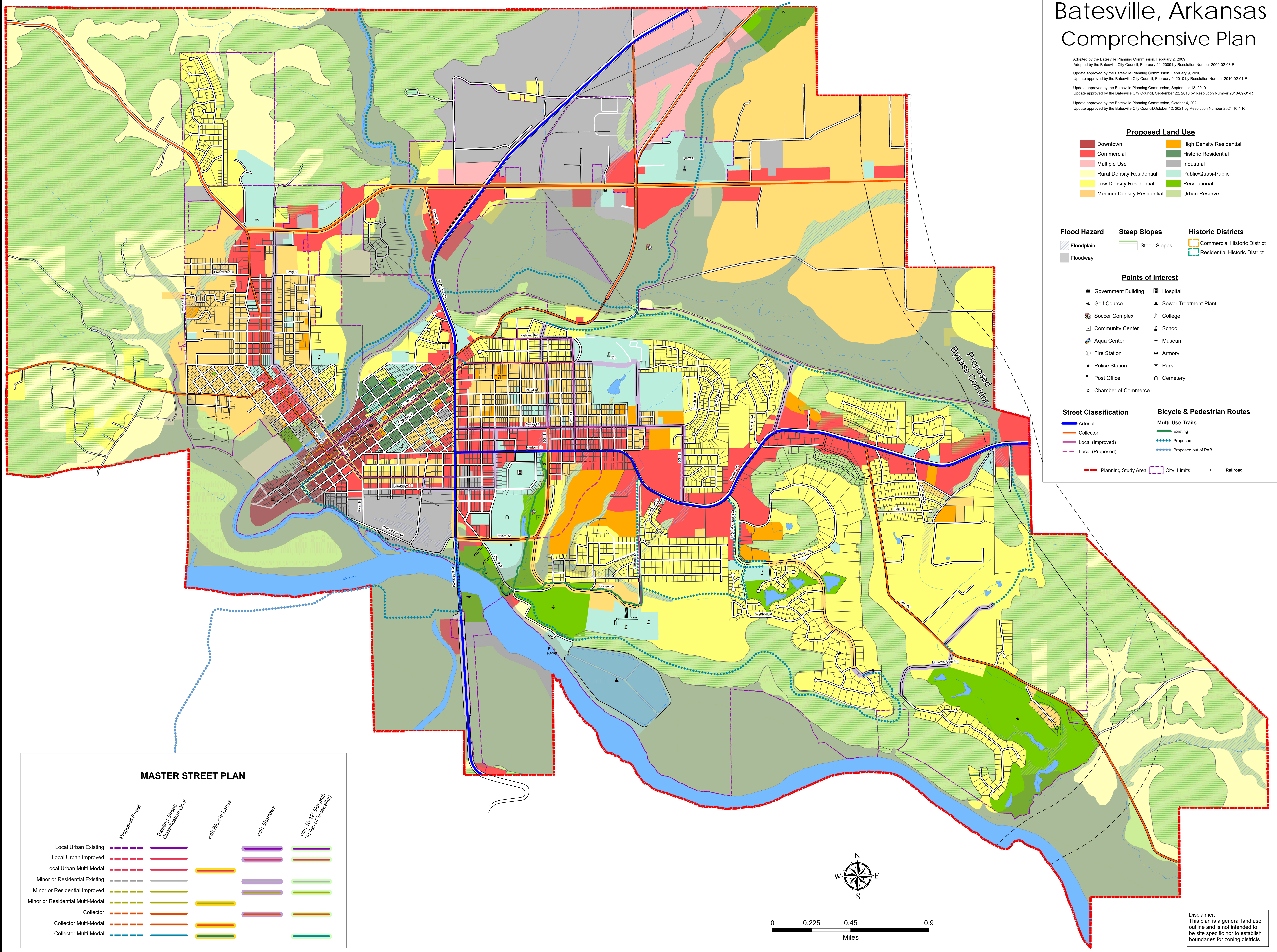
### Street Classification

- Arterial
- Collector
- Local (Improved)
- Local (Proposed)

### Bicycle & Pedestrian Routes

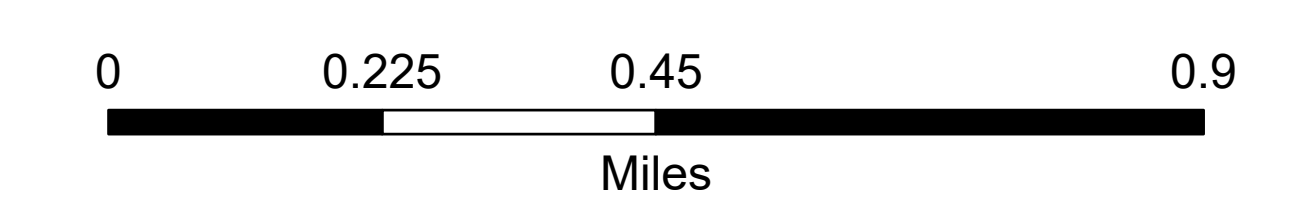
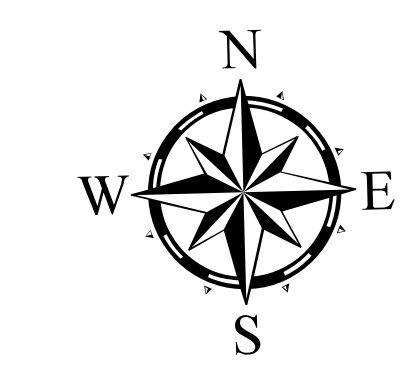
- Multi-Use Trails Existing
- Multi-Use Trails Proposed
- Multi-Use Trails Proposed out of PAB

- Planning Study Area
- City Limits
- Railroad



### MASTER STREET PLAN

	Proposed Street	Existing Street Classification Goal	with Bicycle Lanes	with Sharrows	with 10'± Sidewalk (1/2 mile or sidewalks)
Local Urban Existing					
Local Urban Improved					
Local Urban Multi-Modal					
Minor or Residential Existing					
Minor or Residential Improved					
Minor or Residential Multi-Modal					
Collector					
Collector Multi-Modal					
Collector Multi-Modal					



Disclaimer:  
 This plan is a general land use outline and is not intended to be site specific nor to establish boundaries for zoning districts.